

Kit Contents		
Description	Part No	Pcs
Shock	YA966	1
Bracket	01165-28	1
Screw M6x35	05404-10	2
Nut	00430-02	2
Washer	00153-04	2
Spacer	01138-01	2
Tie-wrap	00231-01	3
Sticker set Öhlins		1
Owners manual	07242-07	1

**👁 Note!**

Please note that there can be small differences between your product and the images in these instructions.

**👁 Note!**

Please note that during storage and transport, especially at high ambient temperature, some of the oil and grease used for assembly may leak and stain the packaging. This will not cause damage to the product, wipe off the excessive oil or grease with a cloth.

**👁 Note!**

Before you install this product, check the kit contents. If anything is missing, please contact an Öhlins dealer.

**⚠ Warning!**

Before you install this product, read the Öhlins Owner's manual. This product is an important part of the vehicle and the vehicle stability.

## Shock absorber for Yamaha XSR 900 GP

# YA 966

### Mounting Instructions



# MOUNTING INSTRUCTIONS

## **⚠ Warning!**

*We strongly recommend to let an Öhlins dealer install this product.*

## **⚠ Warning!**

*If you work with a lifted vehicle, make sure that it is safely supported to prevent it from tipping over.*

## **👁 Note!**

*When you work with this product, see the vehicle service manual for vehicle specific procedures and important data.*

## **👁 Note!**

*Before you install this product clean the vehicle.*

**1**

Put the motorcycle on a work stand so that the rear wheel barely touches the ground.

**2**

Loosen the original preload adjuster and its bracket.

**3**

Remove the front shock absorber attachment screw.

**4**

Remove the rear shock absorber attachment screw. Remove the original shock absorber.

**5**

Install the shock absorber with the cylinder head forward and reservoir to the left. Route the hose to the right and rearwards.

**6**

Loosen the passenger footrest nut and mount the supplied bracket according to the figures.

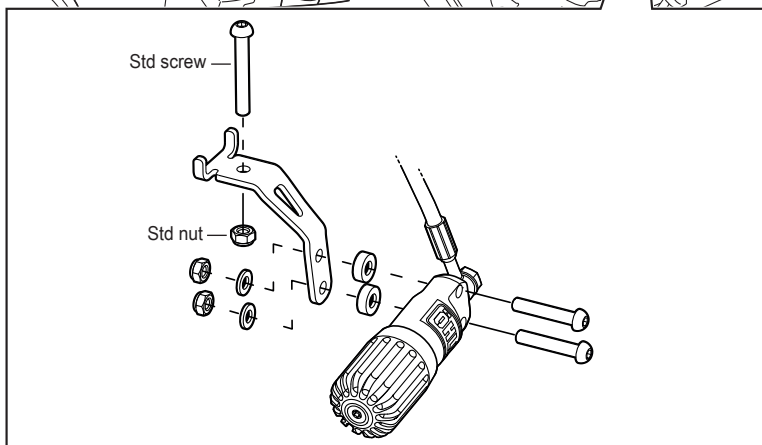
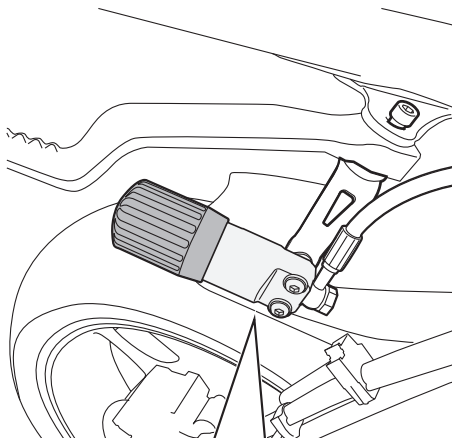
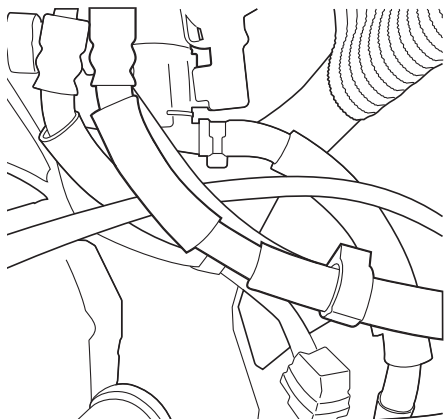
**7**

Install the pre-load adjuster according to the figure. Use the supplied parts according to the figures. Tighten all nuts and screws.

**8**

Fasten the hose with cable ties if necessary. Make sure that the hose runs without sharp bends and that the hose is not squeezed when the rear suspension is compressed or extended.

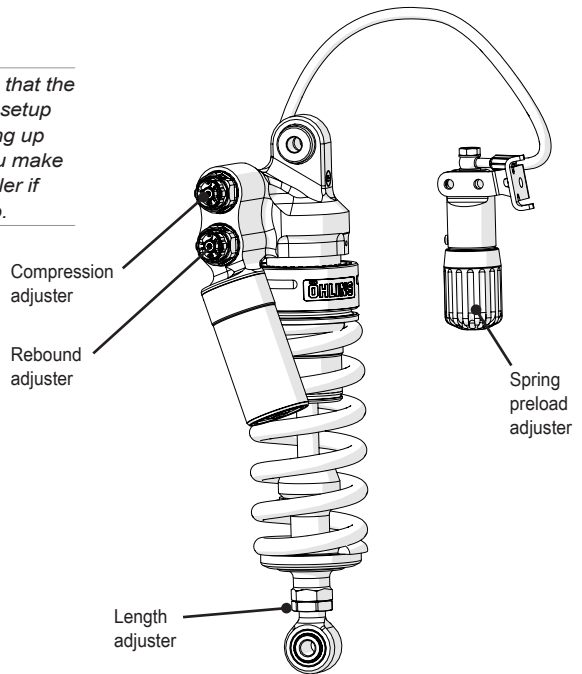
# MOUNTING INSTRUCTIONS



# ADJUSTMENTS

## **⚠ Warning!**

*Before you ride/drive, always make sure that the setup is according to the recommended setup data. Read about adjustments and setting up in the Öhlins Owner's Manual before you make any adjustments. Contact an Öhlins dealer if you have any questions about setting up.*



# SETUP DATA

Length	326 +4/-2	mm
Stroke	62	mm
Compression	12	clicks
Rebound	14	clicks
Spring preload	10	mm
Spring	21040-39	
Spring rate	110	N/mm
Spring free length	160	mm

Öhlins products are subject to continuous improvement and development, therefore, although these instructions include the most up-to-date information available at the time of printing, minor updates may occur.

To find the latest information contact an Öhlins distributor. Please contact Öhlins if you have any questions regarding the contents in this document.

Part no. MI\_YA966\_0  
Issued 2024-10-24

© Öhlins Racing AB. All rights reserved. Any reprinting or unauthorized use without the written permission of Öhlins Racing AB is prohibited.

Öhlins Racing AB  
Box 722  
S-194 27 Upplands Väsby, Sweden  
Phone +46 8 590 025 00  
fax +46 8 590 025 80



[www.ohlins.com](http://www.ohlins.com)