

👁 Note!

Please note that there can be small differences between your product and the images in these instructions.

👁 Note!

Please note that during storage and transport, especially at high ambient temperature, some of the oil and grease used for assembly may leak and stain the packaging. This will not cause damage to the product, wipe off the excessive oil or grease with a cloth.

Kit Contents

Description	Part No	Pcs
Shock absorber	DU 531	1
Sticker set Öhlins		1
Memo Notes Sticker	01180-01	1
Owner's Manual	07242-01	1

👁 Note!

Before you install this product, check the kit contents. If anything is missing, please contact an Öhlins dealer.

⚠ Warning!

Before you install this product, read the Öhlins Owner's manual. This product is an important part of the vehicle and the vehicle stability.

Shock Absorber for Ducati 848/1098/1198

DU 531

Mounting Instructions

MOUNTING INSTRUCTIONS

⚠ Warning!

We strongly recommend to let an Öhlins dealer install this product.

⚠ Warning!

If you work with a lifted vehicle, make sure that it is safely supported to prevent it from tipping over.

👁 Note!

When you work with this product, see the vehicle service manual for vehicle specific procedures and important data.

👁 Note!

Before you install this product clean the vehicle.

1

Put the motorcycle on a workstand so that the rear wheel barely touches the ground.

2

Loosen the left footpeg and leave it for now.

3

Remove the rubber plug and loosen the lower mount for the original shock absorber.

4

Reinstall the left footpeg-bracket.

5

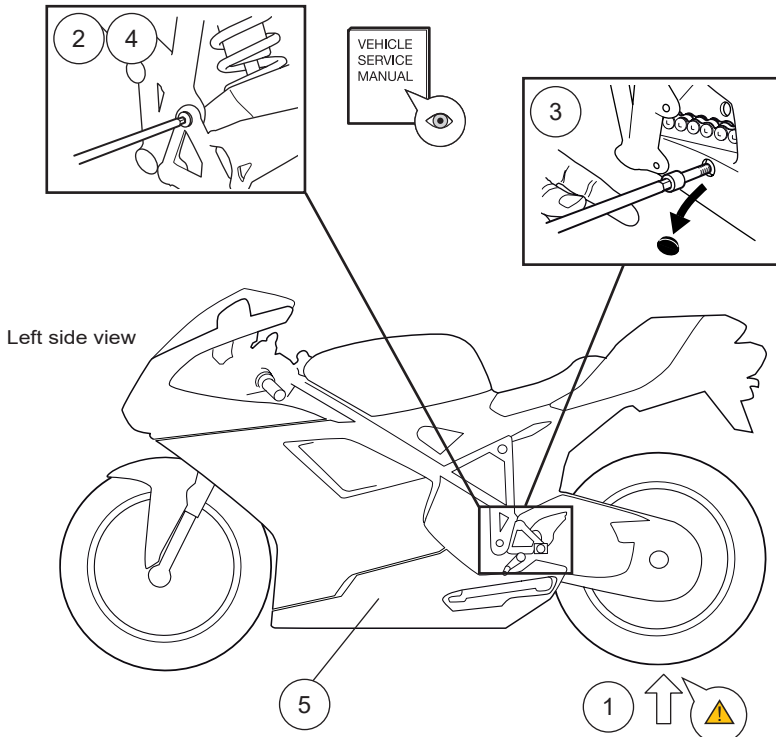
Loosen the screw at the back of the lower side covers (left and right).

6

Remove the right footpeg-bracket.

7

Remove the black cover for the exhaust pipe (right side).



MOUNTING INSTRUCTIONS

8

Disconnect the exp-up-cables.

9

Remove the silencers, and the mid exhaust pipes.

10

Remove the bolts for the rocker arm. Begin with bolt A. Then lower the rear wheel/swing arm to remove bolt B. Finally remove bolt C and remove the whole rocker arm.

11

Lower the swing arm or raise the motorcycle to remove the original shock absorber.

👁 **Note!**

Before installing the Öhlins shock absorber clean the vehicle thoroughly.

👁 **Note!**

Lower the motorcycle so that the shock absorber is slightly compressed, before tightening the screws.

12

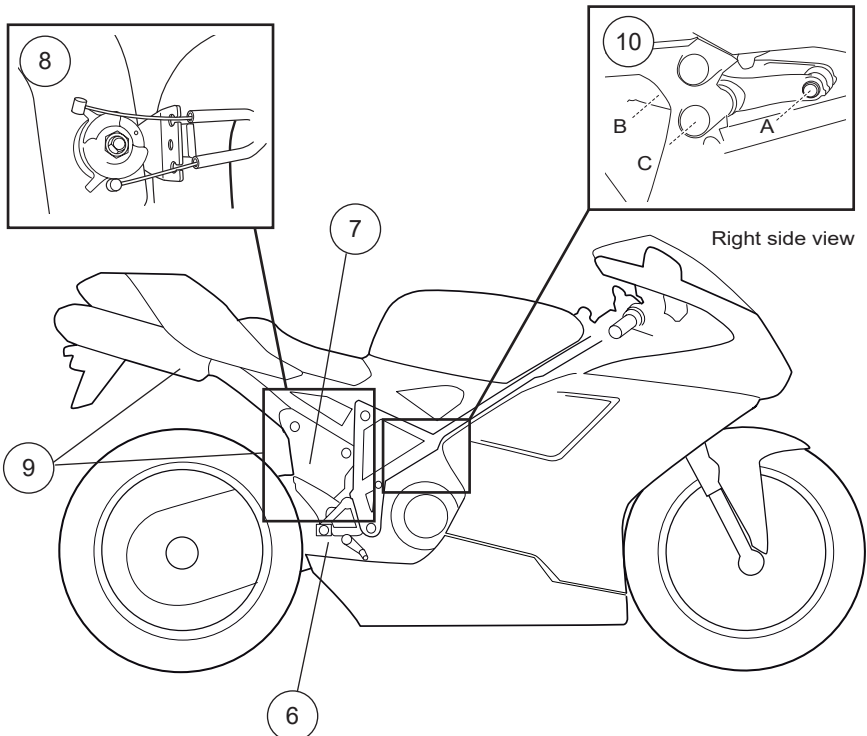
Install the ÖHLINS shock absorber and all parts in reverse order.

13

Make sure that all removed parts are reinstalled in the same way as they were before the installation of the Öhlins shock absorber.

👋 **Caution!**

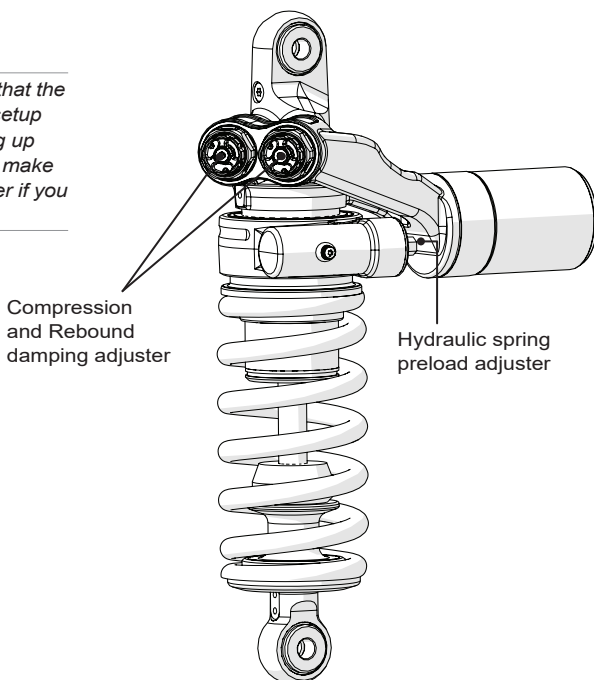
Make sure that all screws are tightened to the correct torque and that nothing fouls or restricts movement of the shock absorber when the suspension is fully compressed or extended.



ADJUSTMENTS

⚠ Warning!

Before you ride/drive, always make sure that the setup is according to the recommended setup data. Read about adjustments and setting up in the Öhlins Owner's Manual before you make any adjustments. Contact an Öhlins dealer if you have any questions about setting up.



SETUP DATA

Length	294,5	mm
Stroke	60	mm
Rebound	14	clicks
Compression	12	clicks
Spring preload	21	mm

Recommended spring

21040-24 (80 N/mm)

Spring free length 160 mm

Öhlins products are subject to continuous improvement and development, therefore, although these instructions include the most up-to-date information available at the time of printing, minor updates may occur.

To find the latest information contact an Öhlins distributor. Please contact Öhlins if you have any questions regarding the contents in this document.

Part no. MI_DU531_0
Issued 2022-01-17

© Öhlins Racing AB. All rights reserved. Any reprinting or unauthorized use without the written permission of Öhlins Racing AB is prohibited.

Öhlins Racing AB
Box 722
S-194 27 Upplands Väsby, Sweden
Phone +46 8 590 025 00
fax +46 8 590 025 80



www.ohlins.com