



Kit Contents		
Description	Part No	Pcs
Shock absorber 46 DRS	BM 836	1
Tie-rod	00231-01	2
O-ring	00438-57	2
Spacer	00838-10	2
Sticker memo notes	01180-01	1
Sticker Öhlins	00192-01	2
Owners manual		1

Note!

Please note that there can be small differences between your product and the images in these instructions.

Note!

Please note that during storage and transport, especially at high ambient temperature, some of the oil and grease used for assembly may leak and stain the packaging. This will not cause damage to the product, wipe off the excessive oil or grease with a cloth.

Note!

Before you install this product, check the kit contents. If anything is missing, please contact an Öhlins dealer.

Warning!

Before you install this product, read the Öhlins Owner's manual. This product is an important part of the vehicle and the vehicle stability.

Shock absorber kit for BMW R 80/100 GS/PD

BM 836

Mounting Instructions

MOUNTING INSTRUCTIONS

⚠ Warning!

We strongly recommend to let an Öhlins dealer install this product.

⚠ Warning!

If you work with a lifted vehicle, make sure that it is safely supported to prevent it from tipping over.

👁 Note!

When you work with this product, see the vehicle service manual for vehicle specific procedures and important data.

👁 Note!

Before you install this product clean the vehicle.

1

Put the motorcycle on a stand so the rear wheel is clear of the ground. The swing arm must be free, so the suspension is unloaded. Make sure it's steadily fixed so it will not fall over.

⚠ Warning!

It's advisable to have an Öhlins dealer or other qualified person to fit your shock absorber. Instructions in the vehicle service manual are to be followed when changing the shock absorber. When working on a lifted vehicle it must be securely supported to prevent it from falling.

2

Remove the side cover on the right side.
Remove the seat.

3

Loosen and remove the lower shock absorber attachment nut and the upper bolt and nut.

👁 Note!

When the bolt is removed it is necessary to lift and support the rear wheel.

4

Remove the lower bolt of the sub frame and remove the original shock absorber.

5

Grind the lower corners of the upper frame mount, so the Öhlins shock absorber head will have full clearance.

6

Fit the Öhlins shock absorber with the gas valve facing rearwards. Mount the spacers, sealing washers and dust seals supplied to the bottom bearing.

7

Fit the lower end of the shock absorber first. Lift the rear wheel and fit the upper bolt and nut.

8

Mount the pre-load adjuster to the rear bracket of the luggage carrier.

👁 Note!

Make sure that the hose has soft bends and not will be squeezed anywhere.

9

Refit the sub frame bolt, side cover and seat.

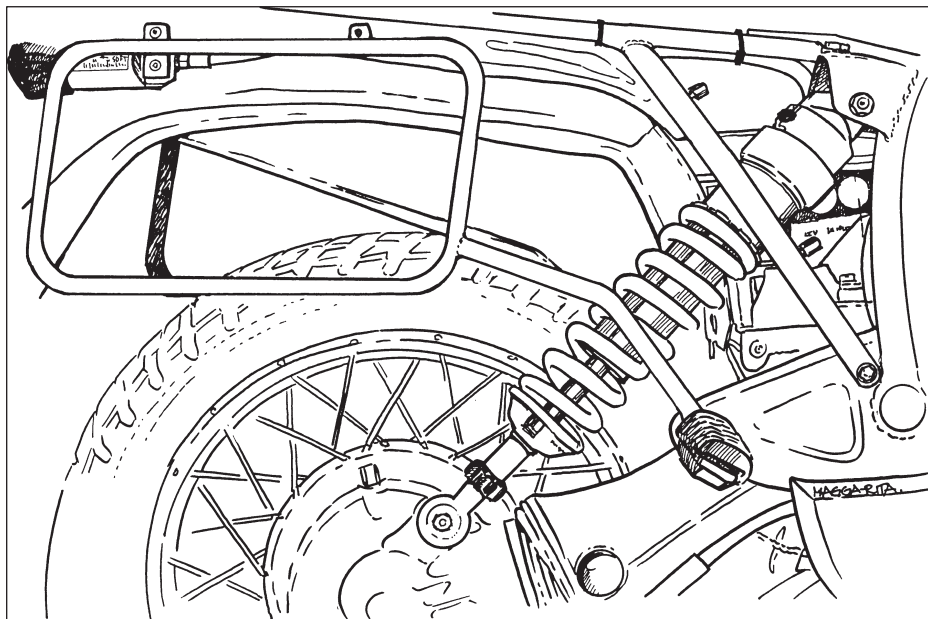
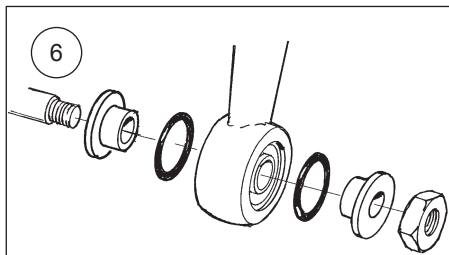
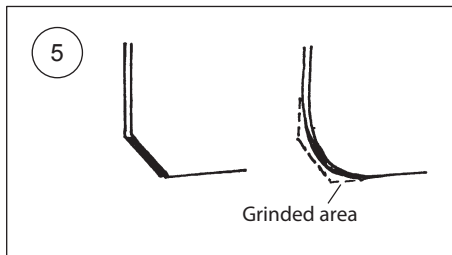
10

Continue your work according to owners manual.

👁 Note!

Make sure that all bolts are tightened to the correct torque and that nothing fouls or restricts movement of the suspension when it is being fully compressed or extended.

MOUNTING INSTRUCTIONS



ADJUSTMENTS

⚠ Warning!

Before you ride/drive, always make sure that the setup is according to the recommended setup data. Read about adjustments and setting up in the Öhlins Owner's Manual before you make any adjustments. Contact an Öhlins dealer if you have any questions about setting up.

SETUP DATA

Shock absorber length	495	mm
Shock absorber stroke	80	mm
Spring preload	17	mm
Rebound damper adjuster	14	clicks



Öhlins products are subject to continuous improvement and development, therefore, although these instructions include the most up-to-date information available at the time of printing, minor updates may occur.

To find the latest information contact an Öhlins distributor. Please contact Öhlins if you have any questions regarding the contents in this document.

Part no. MI_BM836_1
Issued 2014-12-10

© Öhlins Racing AB. All rights reserved. Any reprinting or unauthorized use without the written permission of Öhlins Racing AB is prohibited.

Öhlins Racing AB
Box 722
S-194 27 Upplands Väsby, Sweden
Phone +46 8 590 025 00
fax +46 8 590 025 80



www.ohlins.com