



# GP4-MS 220D60030

The 220D60030 caliper is synonymous with reliability

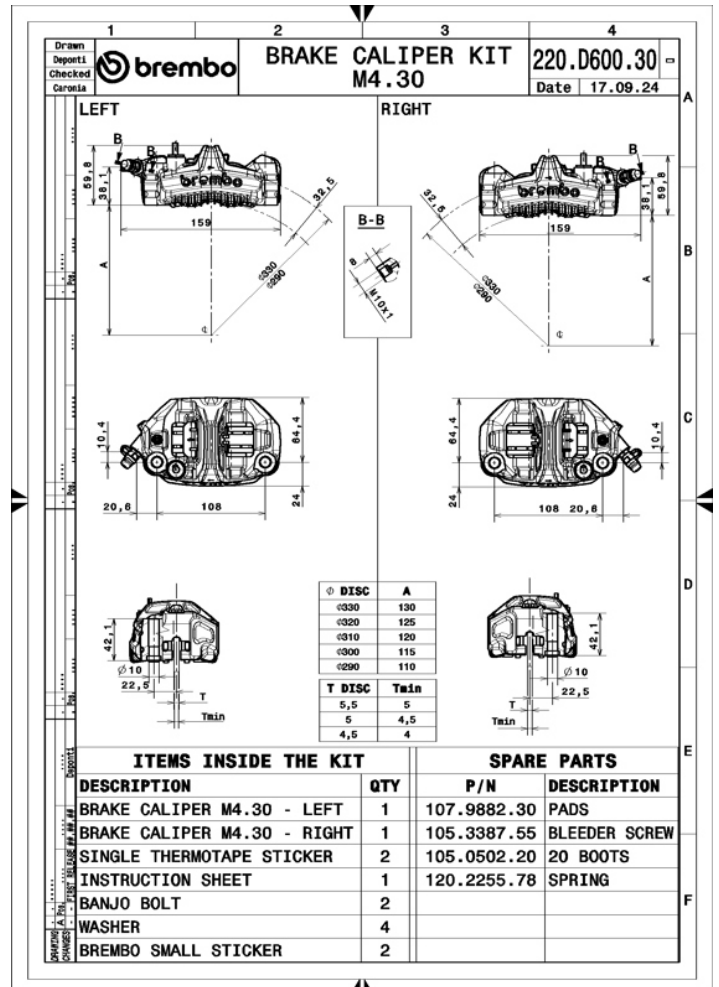
The first Brembo monobloc caliper carved from a billet is now also available for road use. The GP4-MS caliper is the latest addition to the Brembo range and is expected to become the new benchmark for street-legal motorbike upgrades.

- ✓ OE-equivalent
- ✓ Brembo quality
- ✓ Safety
- ✓ Performance
- ✓ Exclusive style
- ✓ Racing inspired
- ✓ Sports driving



## Technical specifications

Piston size <b>30 mm</b>	Number of pistons <b>4</b>	Surface width <b>32-34 mm</b>
Offset <b>22,5 mm</b>	Pads included <b>Yes</b>	Caliper material <b>Aluminium</b>
Protection <b>Nickel</b>	Piston material <b>Aluminium</b>	Weight without pads <b>705 gr</b>
Units per box <b>2</b>		



COMPATIBLE VEHICLES