



## GP4-RX 220B01010

The 220B01010 caliper is synonymous with reliability

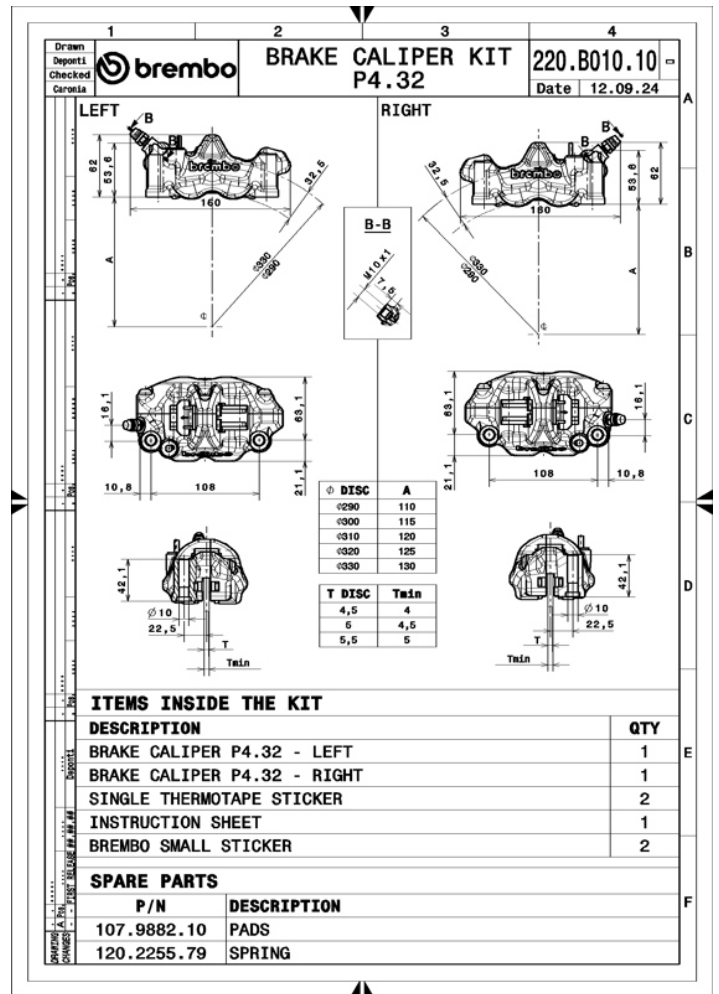
The body of this caliper is carved entirely from a billet and consists of two mechanically connected pieces. Particular care was devoted to seeking high braking power and rigidity by using innovative design solutions. The hydraulics are the result of careful fine-tuning. The use of a single piston diameter allowed a further increase in braking power and modularity.

- ✓ OE-equivalent
- ✓ Brembo quality
- ✓ TUV approved
- ✓ Safety
- ✓ Performance
- ✓ Exclusive style
- ✓ Racing inspired
- ✓ Sports driving



## Technical specifications

|                |                   |                     |
|----------------|-------------------|---------------------|
| Piston size    | Number of pistons | Surface width       |
| <b>32 mm</b>   | <b>4</b>          | <b>32-34 mm</b>     |
| Offset         | Pads included     | Caliper material    |
| <b>22,5 mm</b> | <b>Yes</b>        | <b>Aluminium</b>    |
| Protection     | Piston material   | Weight without pads |
| <b>Nickel</b>  | <b>Aluminium</b>  | <b>705 gr</b>       |
| Units per box  |                   |                     |
| <b>2</b>       |                   |                     |



COMPATIBLE VEHICLES