



## T-DRIVE 208A98553

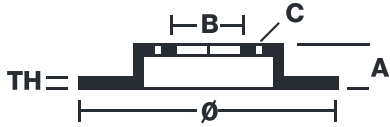
The 208A98553 brake disc is synonymous with reliability

The T-drive disc, born from the experience gained in the top racing categories, is the latest evolution of Brembo racing discs. The special “T”-shape of the pins is the innovative element that strongly differentiates the T-drive from discs with drive pawls. This unique conformation transmits more braking torque, ensuring better resistance to thermal-mechanical stress, especially under extreme conditions of use, such as racing.

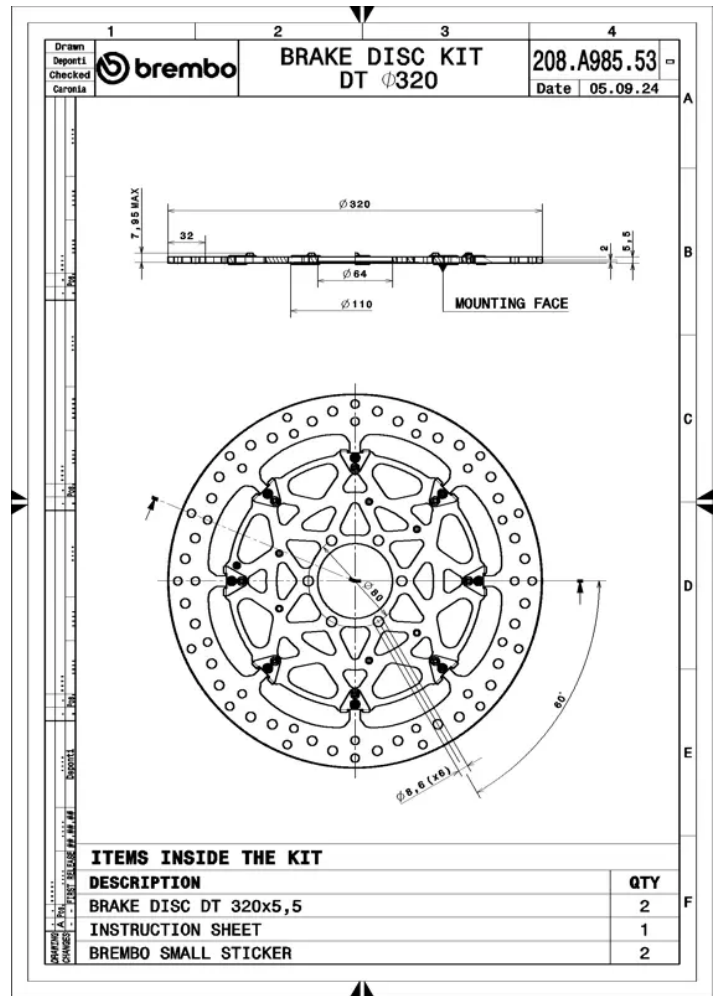
- ✓ OE-equivalent
- ✓ Brembo quality
- ✓ TUV approved
- ✓ Safety
- ✓ Performance
- ✓ Exclusive style
- ✓ Racing inspired
- ✓ Sports driving



## Technical specifications



Diameter Ø	Thickness (TH)	Number of holes
<b>320</b> mm	<b>5,5</b> mm	<b>6</b>
Hole diameter	Centering (B)	Brake disc type
<b>8,6</b> mm	<b>64</b> mm	<b>Floating</b>
Off set (A)	Surface width	Holes fixing (C)
<b>2</b> mm	<b>32</b>	<b>80</b> mm
Units per box		
<b>2</b>		



COMPATIBLE VEHICLES